

Digital High Definition Retinal Evaluation

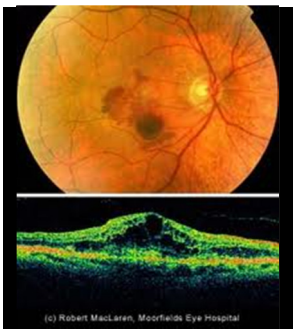
DIGITAL HIGH DEFINITION RETINAL EVALUATIONS are revolutionizing the early detection and treatment of eye conditions such as macula disease, retinal disease and diabetes which may lead to sight threatening impairment. It consists of two very sophisticated and non-invasive imaging techniques that allow us to obtain a series of three dimensional, high definition cross sections of the retinal layers, as well as full color images of the optic nerve, macula and major arteries and veins that supply blood to the retina. Our Digital High Definition Retinal Evaluation also has the capability of measuring the retinal nerve fiber layer thickness for glaucoma and also detects other diseases of the optic nerve.



Normal Retina

Digital High Definition Retinal Evaluation is:

- A non-invasive technique that allows for early diagnosis of disease that can advance without symptoms of warning.
- Essential for patients with a history of diabetes, high blood pressure and other diseases, such as headaches or a strong eyeglass prescription.
- The standard for early detection of glaucoma and macular degeneration.
- Strongly recommended by our doctors for all patients at an additional fee of \$79.

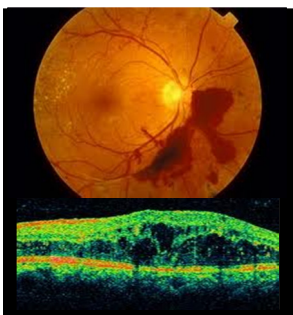


Macular Degeneration

Advanced diagnostic screenings of the retina are not covered by vision insurance plans. You can elect to have this affordable procedure to protect your eye health today.

I **understand** the vital importance of this test and accept responsibility for the additional payment of:

- \$39 Full color image of the retina and optic nerve, or
- \$59 Three dimensional, digital layers of the retina, or
- \$79 Both procedures if elected on the same day



Diabetic Retinopathy

I **decline** the Digital High Definition Retinal Evaluation against medical advice.

Patient name: _____

Signature: _____

